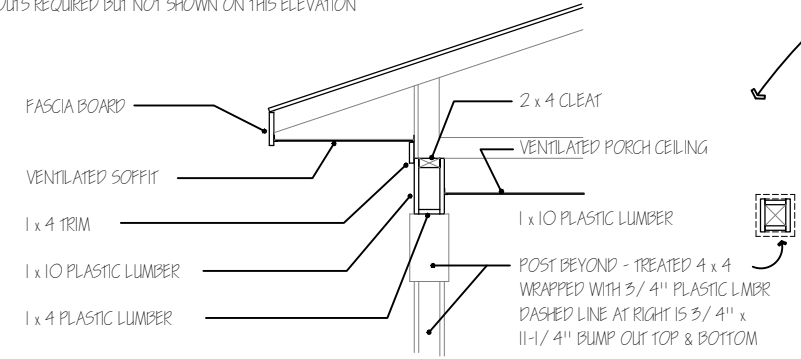


ALUM. GUTTER & DOWNSPOUT SYSTEM AT ALL EAVES

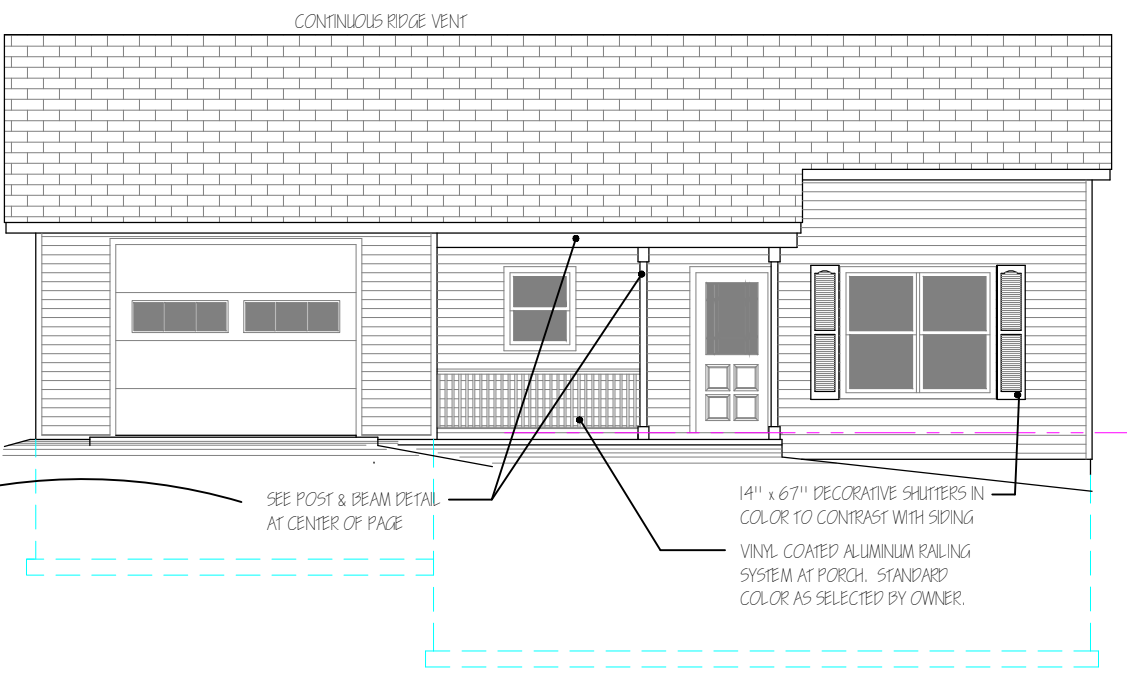
**CANTERBURY LEFT ELEVATION**

SCALE: 1/8" = 1'-0"  
NOTE: GUTTERS & DOWNSPOUTS REQUIRED BUT NOT SHOWN ON THIS ELEVATION



**DETAIL - BEAM @ PORCH**

SCALE: 1/8" = 1'-0"  
NOTE: BEAM IS DECORATIVE - TRUSS IS CANTILEVERED

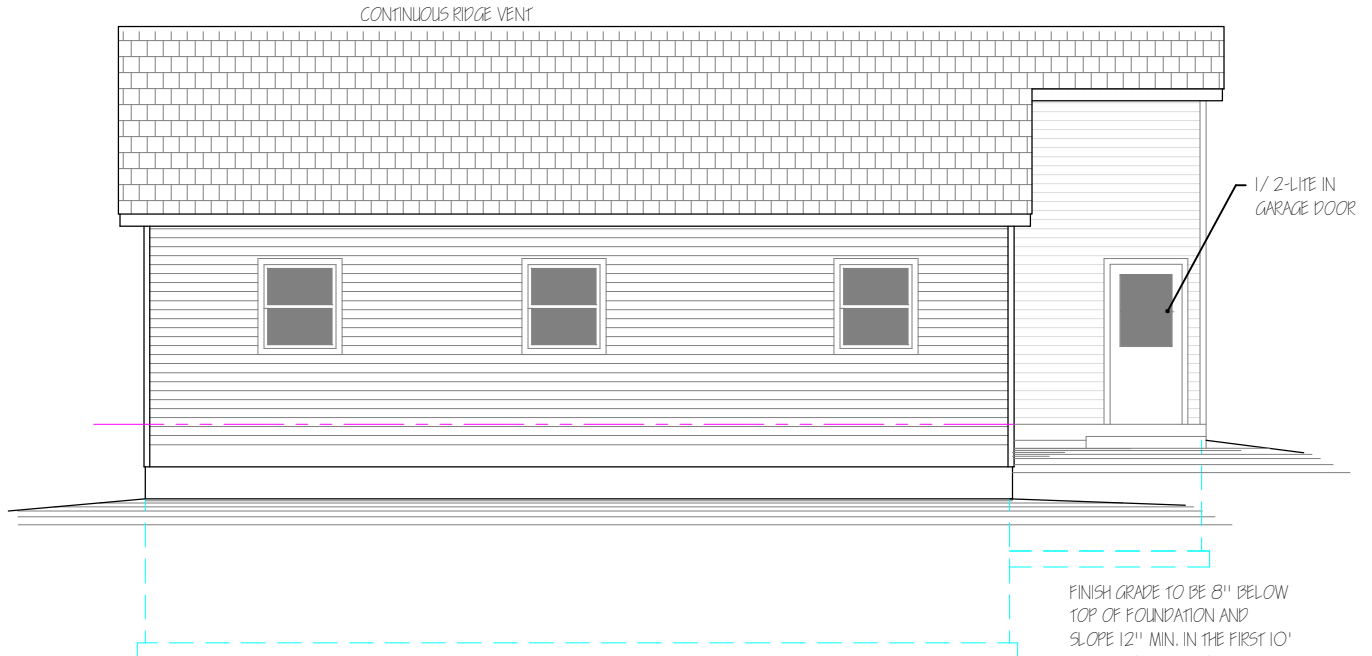


SEE POST & BEAM DETAIL AT CENTER OF PAGE

14" x 67" DECORATIVE SHUTTERS IN COLOR TO CONTRAST WITH SIDING  
VINYL COATED ALUMINUM RAILING SYSTEM AT PORCH. STANDARD COLOR AS SELECTED BY OWNER.

**CANTERBURY FRONT ELEVATION**

SCALE: 1/8" = 1'-0"  
NOTE: GUTTERS & DOWNSPOUTS REQUIRED BUT NOT SHOWN ON THIS ELEVATION  
NOTE: DOOR & KITCHEN WINDOW MOVE SLIGHTLY IF ALTERNATE KITCHEN PLAN IS SELECTED. SEE SHEET A-3A

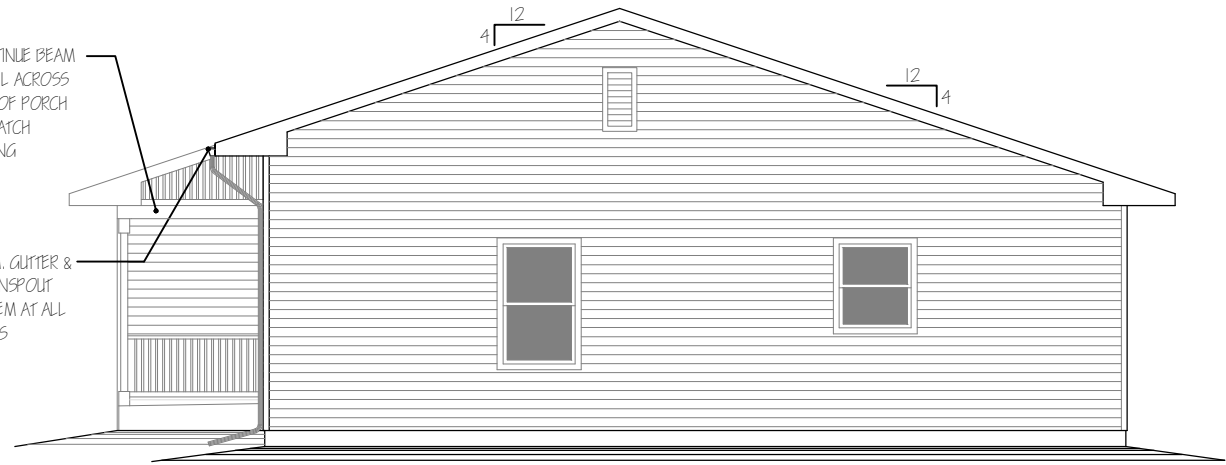


1/2-LITE IN GARAGE DOOR

FINISH GRADE TO BE 8" BELOW TOP OF FOUNDATION AND SLOPE 12" MIN. IN THE FIRST 10' TO INSURE DRAINAGE AWAY FROM THE HOUSE. SLOPE MAY BE 8" IN FIRST 6' AT NARROW SIDE YARDS. REQUIREMENT APPLIES TO ALL SIDES OF HOUSE. GRADE MAY BE HIGHER AT STOOPS AND WALKS.

**CANTERBURY REAR ELEVATION**

SCALE: 1/8" = 1'-0"  
NOTE: GUTTERS & DOWNSPOUTS REQUIRED BUT NOT SHOWN ON THIS ELEVATION



CONTINUE BEAM DETAIL ACROSS END OF PORCH TO CATCH CEILING

ALUM. GUTTER & DOWNSPOUT SYSTEM AT ALL EAVES

**CANTERBURY RIGHT ELEVATION**

SCALE: 1/8" = 1'-0"

**REVISIONS**

HABITAT FOR HUMANITY - WISCONSIN RIVER AREA  
1211 Eighth Street, Baraboo, WI 53913 608-448-2888  
CANTERBURY MODEL - ELEVATIONS

Jan 4, 2022

**A-6**  
OF SIX